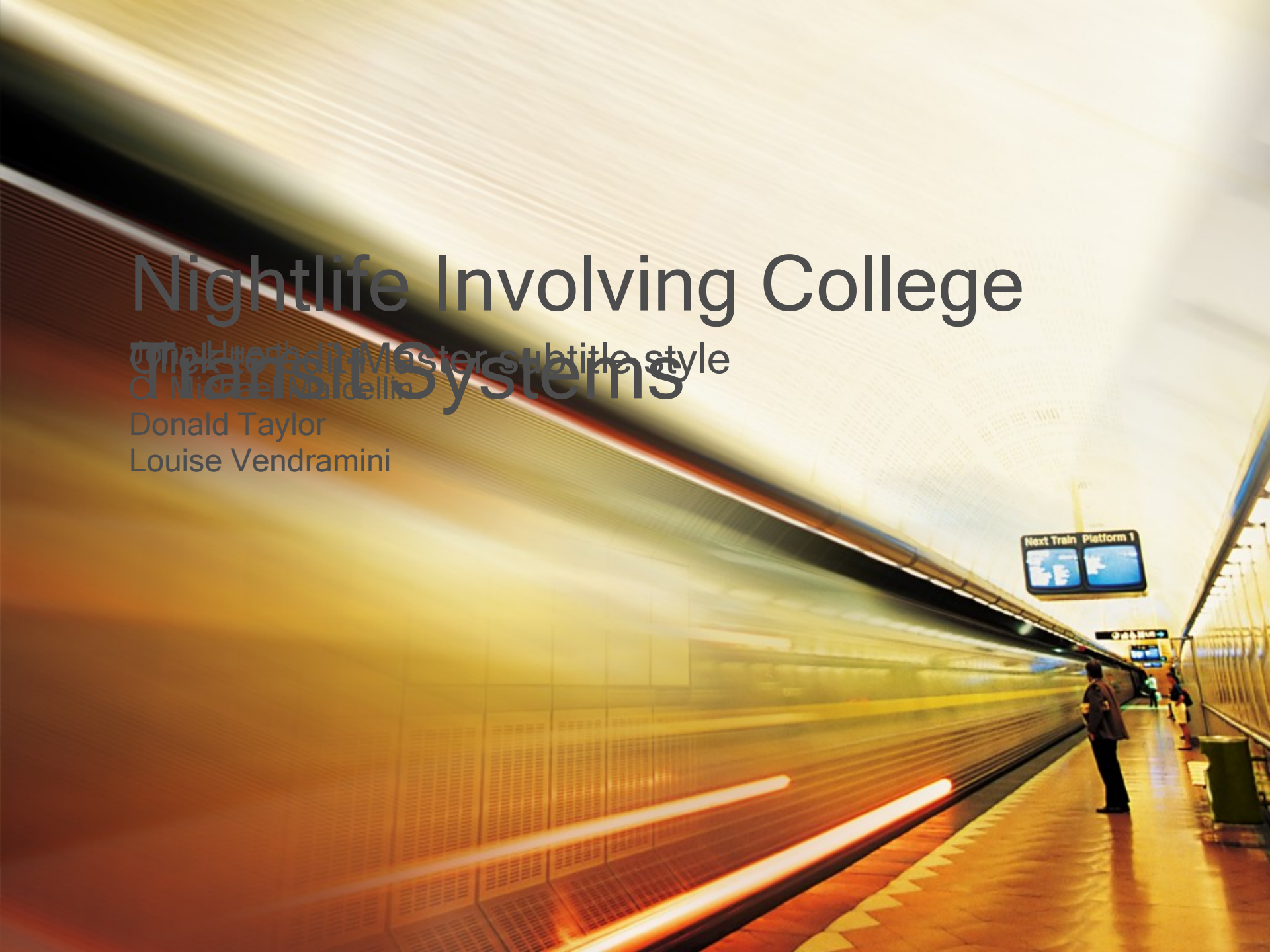


Nightlife Involving College

PhD Candidate in Master's subtitle style
Orlando, Florida
Donald Taylor
Louise Vendramini

Donald Taylor

Louise Vendramini

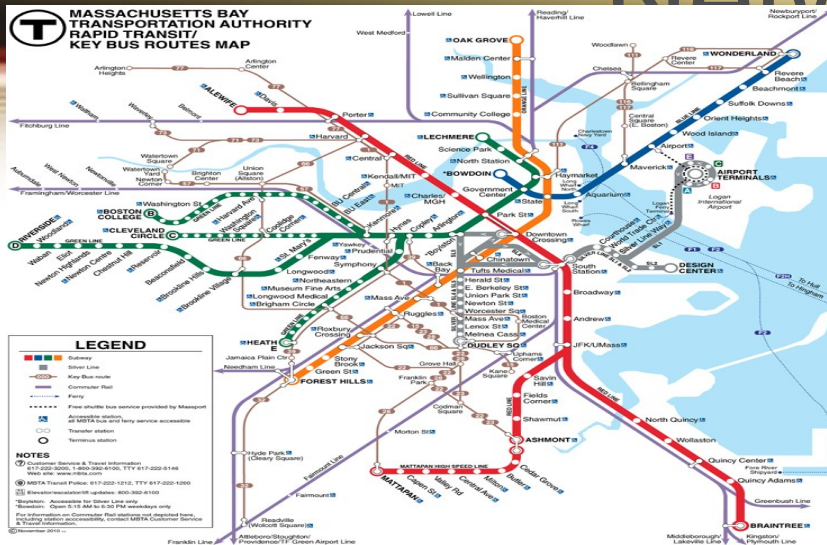


History of Boston Transit Subway Line

- Mass subway public transit officially started in 1859
- Horsecar rail lines
- Transported passengers from Central Square, Cambridge to the West Boston Bridge to Bowdoin Square



Subway Transportation Network



- Delevopment and design of rail lines and transportation vehicles lead to current subway transportation network & services
- Color coded subway lines
 - Blue, Orange, Red, and Green lines
- Inbound (city) & outbound (surrounding areas) subway services
- Furthest points included Wonderland (Blue Line), Forest Hills to Oak Grove (Orange line), Brain tree/Mattapan to Alewife (Red Line), Riverside to Lechmere (Green Line)

Northeastern Nightlife Culture



- Nationally rated an A- for college night life experiences
- Popular bars include Umbria, Mcfaddens's Pub, Black Rose
- Downfalls
 - Clubs & Bars close at 2 a.m. and public transit shuts down at 1 a.m.

Government Center (Brief Overview)

- Government Center is a transfer point between the Green Line and the Blue Line
- Has been around since the first subway system in America was built in Boston during (1897)
- Initial Name of Government Center Station:
 - Scollay Square Station

Government Center Attractions

- Government Center is famous for:
 - TD Garden
 - Faneuil Hall
 - Quincy Market
 - City Hall Plaza
 - New England Aquarium
 - Beacon Hill
 - The State House
 - The North End

Night Life Attractions

- The Purple Shamrock
- Hard Rock Café
- Kitty O'Shea's Irish Pub
- Gypsy Bar
- Littlest Bar
- Hub Pub
- 21st Amendment

• Bars Clubs

- Hennessy's
- Green Dragon
- Black Rose
- Felt Lounge
- The Rack

Potential Routes to Government Center Station

- On-Campus students live in dormitories on Huntington Ave which is closest to the Green Line (Northeastern Station)
- Off-Campus students tend to live on Columbus Ave which is closer to the Orange Line (Ruggles Station)



Potential Subway Routes to Government Center (cont'd)

• ~~GREEN LINE~~

- From Northeastern Station, take the Inbound Green-Line Train, Letter E (aka Lechmere) to Government Center
- Approximate Time from Northeastern Station to
- From Ruggles Station, take the Inbound Orange-Line Train to either Haymarket or North Station.
- Then, transfer onto the Inbound Green Line to Government

Subway Fares

Pass Type	Pass Access	Cost
CharlieCard		\$1.70
CharlieTicket/Cash-on-board		\$2.00
Montly LinkPass	Unlimited travel on Subway plus Local Bus	\$59/month
Day/Week LinkPass	Unlimited travel on Subway, Local Bus, Commuter Rail Zone 1A, and Inner-Harbor Ferry	\$9.00 for 1 day \$15.00 for 7 days

Constraints

- Constraints Assuming Northeastern students stay out past 1am
- Average Boston Bar/Club open until 2am
- MBTA shuts down at 1am which creates a dilemma for Northeastern college students
- Forces alternative means of transportation (private modes)

Green Line T - Schedule

RAPID TRANSIT LINE		WEEKDAY			SATURDAY			SUNDAY		
Green Line	Evening Service	Late Night Service	Last Trip	Evening Service	Late Night Service	Last Trip	Evening Service	Late Night Service	Last Trip	
“B”										
LV BC	10 Min	11 Min	12:10AM	7 Min	11 Min	12:10AM	10 Min	10 Min	12:10AM	
LV Gov. Ctr.	10 Min	11 Min	12:52AM	7 Min	11 min	12:50AM	10 Min	10 Min	12:48AM	
“C”										
LV Cleveland	7 Min	14 Min	12:10AM	8 Min	10 Min	12:10AM	10 Min	10 Min	12:10AM	
LV N.Station	7 Min	14 Min	12:46AM	8 Min	10 Min	12:50AM	10 Min	10 Min	12:48AM	
“D”										
LV Riverside	10 Min	13 Min	12:05AM	10 Min	10 Min	12:00AM	10 Min	10 Min	12:00AM	
LV Gov. Ctr.	10 Min	13 Min	12:47AM	10 Min	10 Min	12:47AM	10 Min	10 Min	12:45AM	
“E”										
LV Lechmere	10 Min	14 Min	12:30AM	10 Min	10 Min	12:30AM	10 Min	10 Min	12:30AM	
LV Heath St.	10 Min	14 Min	12:45AM	10 Min	10 Min	12:45AM	10 Min	10 Min	12:47AM	

Times of Congestion on the T

Schedule Periods Note:

- Rush Hour AM: approx. 6:30AM - 9:00AM
- Midday: approx. 9:00AM - 3:30PM
- Rush Hour PM: approx. 3:30PM - 6:30PM
- Evening: approx. 6:30PM - 8:00PM
- **Late Night: approx. 8:00PM - Close**

Source: www.mta.com

Public Modes of Transportation to & from Northeastern

- Bus - Route 37 and 8
- Subway - Green Line & Orange + Green Line

Modes	Minimum Cost (Charlie Card)	Cost One Way	Cost Round Trip	Time One Way	Time Round Trip
Bus (47 & 8)	\$ 1.70	\$ 1.50	\$ 3.00	19 Minutes	38 Minutes
Train (Green Line + Orange Line)	\$ 1.70	\$ 2.00	\$ 4.00	20 minutes	40 Minutes
Train (Green Line)	\$ 1.70	\$ 2.00	\$ 4.00	25 Minutes	50 Minutes

Private Alternative Modes of Transportation from Government Center to Northeastern

- Cars
 - Government Center Parking Garage
- Walking
- Taxi

Modes	Cost One Way	Cost Round Trip	Time One Way	Time Round Trip
Car	N/A	\$ 10.15	N/A	30 Minutes
Car (private pick up)	\$ 1.11	N/A	N/A	15 Minutes
Taxi +tip	\$ 15.00	\$ 30.00	15 Minutes	30 Minutes
Walking	\$ -	\$ -	1 Hour	2 hours

Costs Vs. Benefits of Alternative Modes of Transportation

Private Pickup

Walking

Taxi

Cost from Government Center to Northeast
Benefit

short distance as long as a reliable source is available.

So which alternative is best?

t. of approximately \$15 with \$0.55 and a 15 minute travel time, having a friend

Walking

Taxi

Private Pickup

foot back to Northeastern poses a time of nearly an hour with consideration

