



WIRTSCHAFTS  
UNIVERSITÄT  
WIEN VIENNA  
UNIVERSITY OF  
ECONOMICS  
AND BUSINESS

# Hurricane Mitch – Natural or organizational disaster?



Christian Burkart  
Nathan Erdman  
Stephanie Nguyen  
Oliver Schneider  
Mathias Winder



# Overview

- Mitch's Path of Destruction
- Key Facts on Hurricane Mitch
- The IFRC
  - Shortcomings
  - Future Response Plan
- Paper Outline
- References



# Mitch's Path of Destruction



Source: [http://www.cite-sciences.fr/actu/numeros/N65\\_dec98\\_jan99/reperes/html/reperes\\_1.html](http://www.cite-sciences.fr/actu/numeros/N65_dec98_jan99/reperes/html/reperes_1.html)

# Mitch's Path of Destruction



Source: Wikipedia; [http://en.wikipedia.org/wiki/File:Mitch\\_1998\\_track.png](http://en.wikipedia.org/wiki/File:Mitch_1998_track.png)

# Key Facts on “Mitch”

- Formed October 22<sup>nd</sup> 1998 in the Caribbean Sea
- Dissipated November 5<sup>th</sup> 1998 near Florida
- Category 5 Hurricane, which diminished power when making landfall
- Heavy rainfall (1900mm) produced massive landslides
- 10,000 people were confirmed dead
- 70–80% of the transportation infrastructure of the entire region was wiped out
- Damages reached \$6 billion



# IFRC – Shortcomings in the Disaster Response

- Emergency Response Units were deployed at the last minute
- IFRC slow to coordinate relief contributions
- Basic supplies such as food, water and shelter took weeks to reach beneficiaries
- Assistance from the US and Mexican governments had already been received



# IFRC – Future Response Plan

## **PADRU – Pan-American Disaster Response Unit**

- Provide immediate disaster coordination for the Americas
- Objectives:
  - To strengthen relationships with internal and external partners
  - Establishing strategic alliances with “Non-Red Cross” organizations to take advantage of their human resources, experience, capital, & technical expertise



## **FACT – Field Assessment Coordination Team**

- Standby members, deployable within 12-24 hours for up to six weeks
- Consists of experienced disaster managers with training in specific areas like relief, logistics, water, sanitation, nutrition, etc.
- Carries out rapid assessments immediately after a disaster
- Allows fast deployment of supplies without the immediate need for long-term support

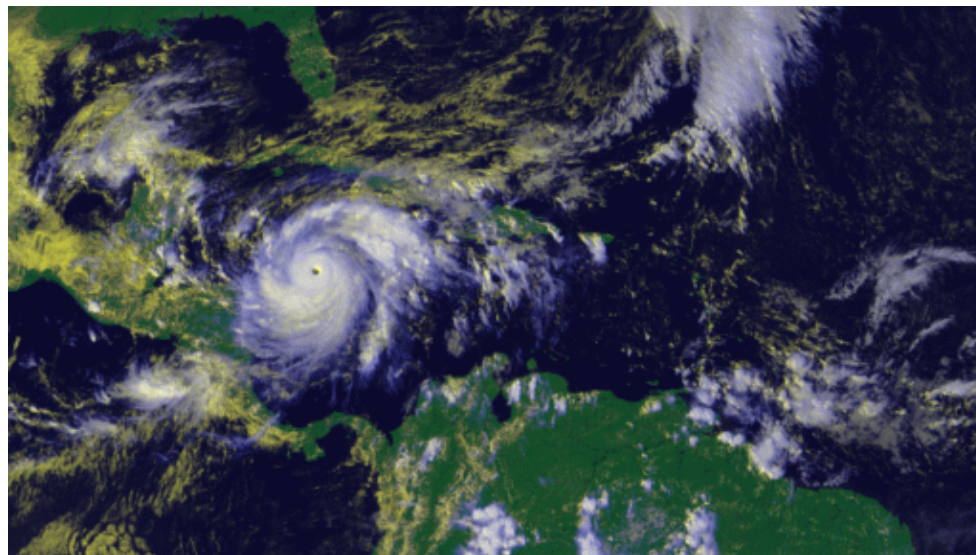
# Paper Outline

- **Introduction** to Disaster Logistics and IFRC
- **Background Info** on Hurricane Mitch
- **Shortcomings** of IFRC Relief Operations
- **Improvements** to IFRC Relief Network
- **Conclusion** and Lessons Learnt
- References



# References

- Samii, R., Van Wassenhove, L. N., Kumar, K., & Becerra-Fernandez, I. (2002). IFRC Choreographer of Disaster Management: Preparing for Tomorrow's Disasters. *INSEAD case study*, 45039.
- [http://www.cite-sciences.fr/actu/numeros/N65\\_dec98\\_jan99/reperes/html/reperes\\_1.html](http://www.cite-sciences.fr/actu/numeros/N65_dec98_jan99/reperes/html/reperes_1.html)
- [http://en.wikipedia.org/wiki/File:Mitch\\_1998\\_track.png](http://en.wikipedia.org/wiki/File:Mitch_1998_track.png)



# The End

## Any Questions?

