

Emergency Management In Healthcare

Thomas F. Lynch
February 9, 2017

Fundamentals of EM

- ▶ Take care of yourself
- ▶ Take care of people
- ▶ Take care of property

- ▶ Once people are addressed, stabilizing the situation to prevent additional loss of life and damage can begin. Care of people begins with you.

The Expectation of Readiness

- ▶ Responsibility to the community
- ▶ Accountability to Local, State and Federal agencies
- ▶ Accountability to our own employees

Team Building

- ▶ Physicians
- ▶ Senior leaders
- ▶ Pharmacy
- ▶ Engineering
- ▶ Security
- ▶ ED
- ▶ Surgery
- ▶ Safety
- ▶ Human Resources
- ▶ Spiritual Services
- ▶ Food and nutrition
- ▶ Laboratory
- ▶ Infectious Diseases

External Partners

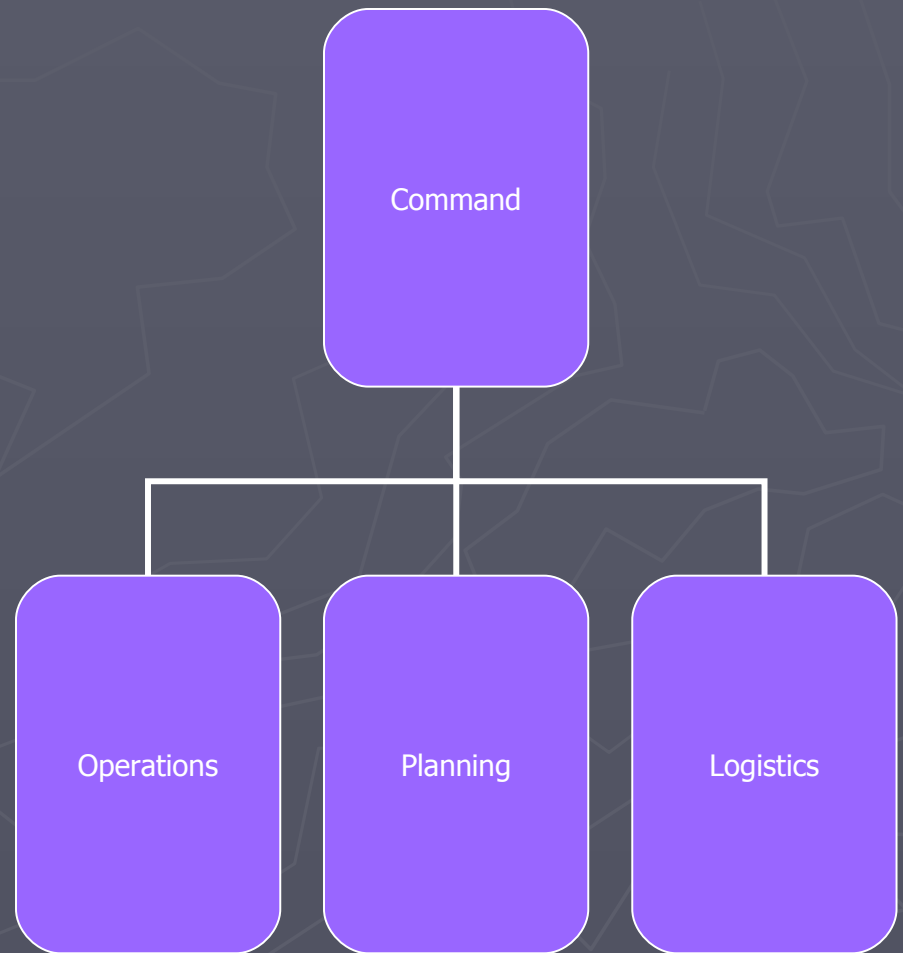
- ▶ City - Office of Emergency Preparedness and city departments
- ▶ Regional- Other healthcare facilities and multiagency groups (WRHSAC)
- ▶ State- DPH, MEMA
- ▶ Federal- VA, FEMA

Organization

- ▶ All agencies have a standard organizational set up
- ▶ Derived from the fire services largely in CA
- ▶ With standard organization, everyone is speaking the same language
- ▶ Huge lesson from the 9/11 tragedy

Organization

- ▶ All set on this base
- ▶ Flexibility based on need
- ▶ Job books for each position with defined reporting structure



Threat Assessment

- ▶ Hazard Vulnerability Assessment
- ▶ Living document
- ▶ Basis for planning

Assessment areas

- ▶ Naturally occurring
- ▶ Manmade
- ▶ Technological
- ▶ Hazardous materials

Plans derived from the HVA

- ▶ Mass Casualty
- ▶ Fire
- ▶ Weather
- ▶ Hazmat- internal and external
- ▶ Bioterror
- ▶ Infant abduction
- ▶ Evacuation
- ▶ Active Shooter
- ▶ Civil Disturbance
- ▶ IT outage

Gap Analysis

Since Hurricane Katrina, hospitals have to do an annual analysis with regard to sustainability.

Presuming there is no outside assistance available, at what point in the first 96 hours after an emergency would the facility have to evacuate.

Drills and Exercises

- ▶ Two per year are required
- ▶ One has to be community based and designed to stress the facility's capability to respond.
- ▶ Actual emergencies can be substituted.

What happens When it is Real?

- ▶ Barricade
- ▶ Drive by Shooting
- ▶ Halloween snow
- ▶ Pan Flu and Ebola

What do You Tell People/Leaders?

- ▶ Trust in your training
- ▶ Trust in your fellow staff
- ▶ You are never alone

Keys to Success

- ▶ Drill, drill, drill
- ▶ Use every event to evaluate plans
- ▶ Relationships will make all the difference

Resources

- wrhsac.org
- mema.gov
- fema.gov